



Flap Strip

Flexible wing doors
and flexible strip doors



▶ Flap

Flexible wing door

▶ Easy and functional

Flap is a solid swing door with flexible wings. Thanks to its absolutely reliable structure it helps to save energy and make passing through faster. It is available in the manual version: with manual wing opening, or in the servo-assisted version: with pneumatic and electropneumatic functioning.

A wide choice of flexible curtains is available.

▶ Sturdy and reliable structure

Its rugged metal structure frame in galvanized steel or in stainless steel, consists of a specially shaped section which results in a high mechanical strength and elasticity.

Reclosing mechanisms consist of a torsion spring adjustable system, galvanized fastening plates; revolving floor drains are mounted on ball bearings.

It is available in a wide choice of (DIN 4102) totally transparent and self extinguishing, flexible curtains, or coloured PVC or anti-abrasion rubber; frame fastening ends are strengthened with special polyester, double inserts.

▶ Versatile in its three versions

Flap is available in three versions:

Standard, with push manual opening and spring closing.

Contact, in semiautomatic version.

The door opens by a mechanical piston placed on each wing, applying pressure onto the curtains; opening is two-directional, closing is by spring.

Automatic, with a couple of pneumatic pistons placed in a thrust position compared to the opening, which, by means of a remote control (i.e. radar, radio remote controls, etc.) actuate mono-directional wing opening.

Closing is by spring.

An optional, "double effect" system is also available, to control opening, closing and stop by pneumatic logic.

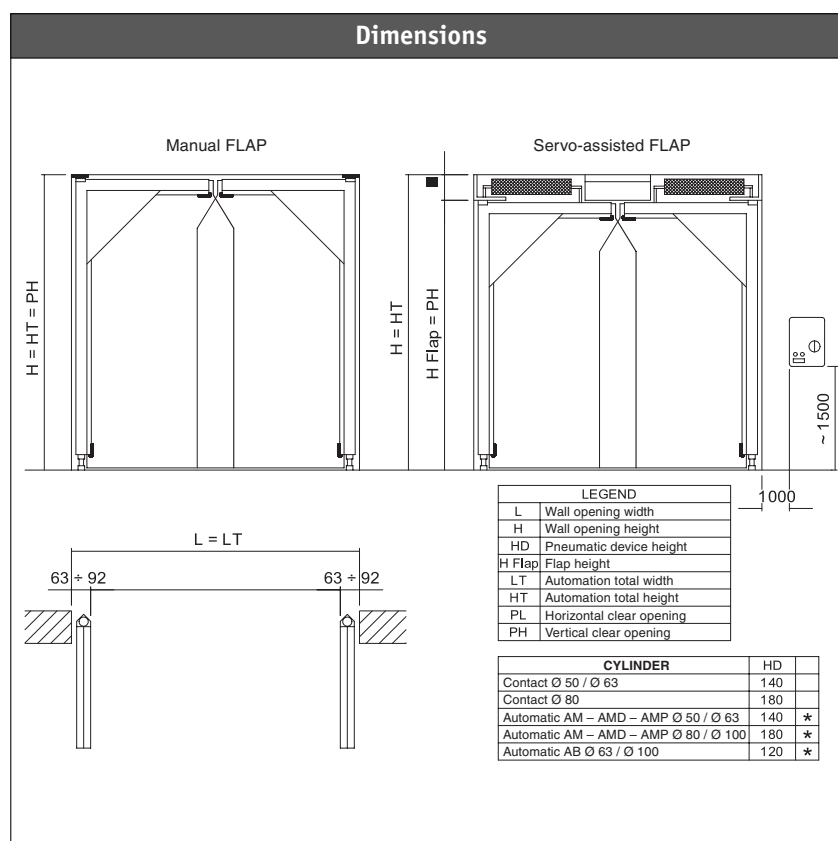
▶ Main technical features

- ▶ Galvanized steel or satin-finish AISI 304 stainless steel frame for two-wing doors.
- ▶ Spring closing mechanisms and floor drains with ball-bearings.
- ▶ RAL coating. Extra charge for smooth, epoxide-powder coating.
- ▶ FLAP servoassistance electropneumatic and pneumatic devices, consisting of two pneumatic pistons with accessories are available in the following types:

CONTACT CT. Push-button, two-directional, pneumatic device (CT with guiding plates and galvanized steel casing, CT-Y with special guiding plates and stainless steel casing).

AUTOMATIC AM. Mono-directional pneumatic device with pneumatic opening and spring closing, including electropneumatic control panel (AM with guiding plates and steel casing, AM-Y with special guiding plates and stainless steel casing).

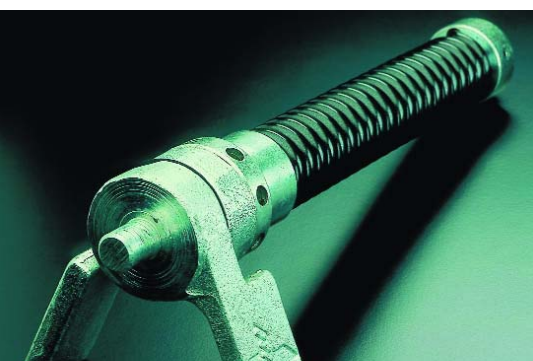
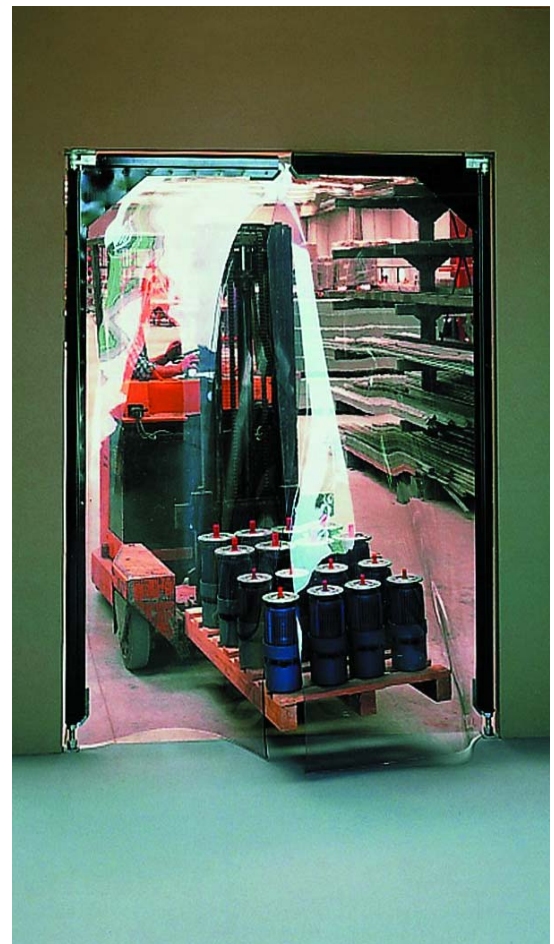
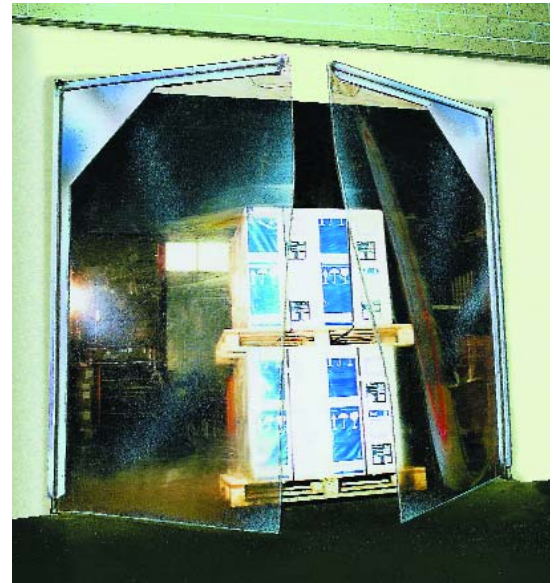
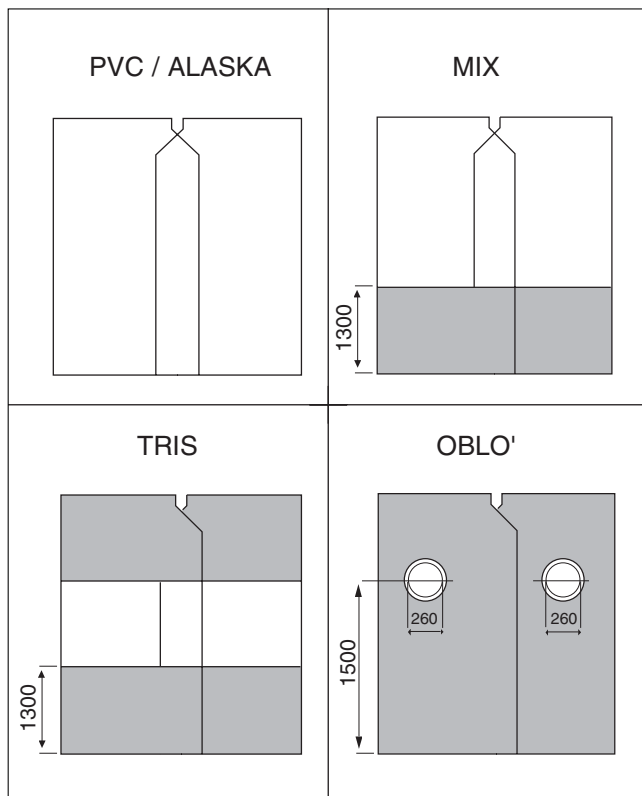
AUTOMATIC AMP. Mono-directional pneumatic device with pneumatic opening and spring closing, including pneumatic logic control panel.



▶ Technical features of the curtain

PVC curtain with strengthened borders, available in the following versions:

- ▶ Transparent PVC < 3000 thickness = 5 mm, > 3000 thickness = 7 mm
- ▶ ALASKA PVC, transparent, for very low temperatures, thickness = 5 mm
- ▶ Grey and yellow PVC, flexible curtain, thickness = 5 mm, available in the following versions:
 - MIX, with lower skirting in painted PVC and transparent upper part
 - TRIS (with three sections) with lower skirting and head in painted PVC, transparent central part
 - OBLO (with portholes) in coloured PVC with portholes in yellow moplen
- ▶ Anti-abrasion black rubber flexible curtain, with 2 strengthening inserts in MIX and TRIS versions.



Strip

Strip flexible doors

Quick fastening and high operational flexibility

Strip is the simple transparent PVC door, suitable to divide big and small spaces.

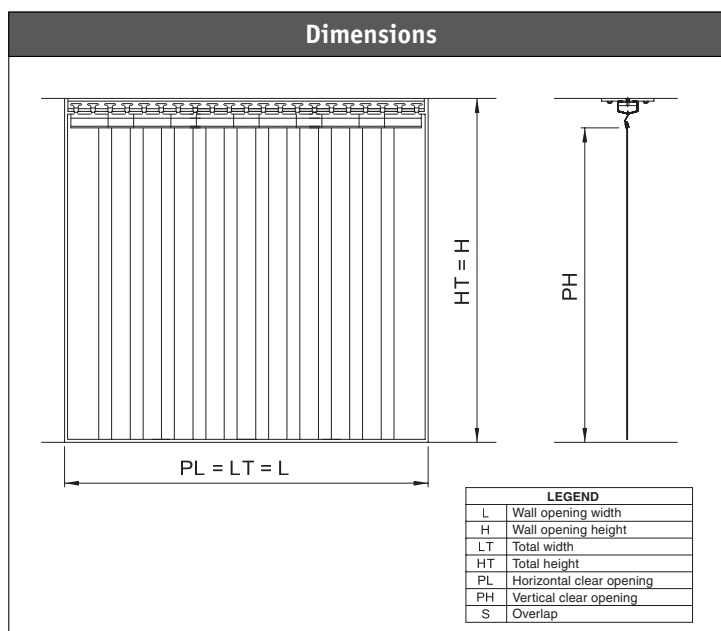
Thanks to Strip, company departments can be functionally separated without losing luminosity. Passing from one department to another is totally trouble-free and thanks to its high operational versatility Strip can satisfy any special requirement. You can have it fixed or sliding on a straight-line track.

It is equipped with Rapid, the special quick fastening/unlocking system, which allows trouble-free installation, quick unlocking of the strips with the possibility of drawing them to the side and placing them one on top of the other when the door is not used for a period of time or closing is not needed.

It helps reduce loss of heat because it opens just enough to let vehicle/people, etc. through.

Main technical features

- ▶ Special RAPID system, with galvanized steel or AISI 304 stainless steel modular metal structure, enabling trouble-free assembling/disassembling of the strips. This system allows to change strip arrangement according to necessity and in idle periods, side tidying up is possible.
- ▶ Flat fitting bearings for under crosspiece fastening or corner fitting bearings for front fastening when no other installation solution is possible.
- ▶ Galvanized steel single or double tracks with flat and corner fitting bearings.



Strip

Flexible wing doors and flexible strip doors

DITEC
SPECIALISTI
IN INGRESSI
AUTOMATICI

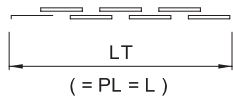
Strip features

- Self-extinguishing PVC, cut-to-measure strips with rounded borders, fastened on special swinging jaws, which, allowing strips to swing, prevent them from being damaged during passing through.
- A wide range of strip arrangement solutions allow to satisfy any installation requirements.

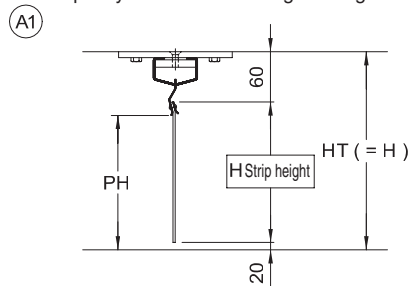


Types of installation

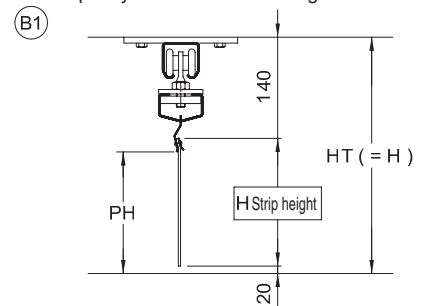
Within doorway installation



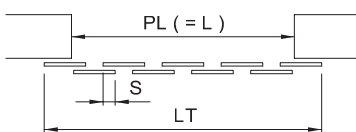
Rapid system with flat fitting bearings



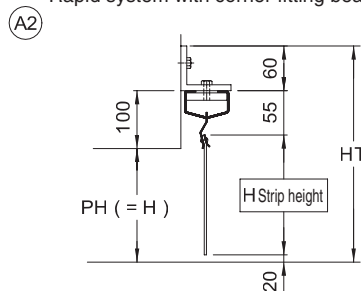
Rapid system with flat bearing track



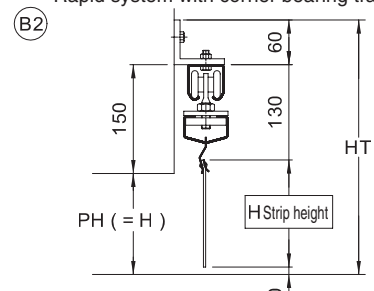
Outside doorway installation



Rapid system with corner fitting bearings



Rapid system with corner bearing track



Safety and control systems

- ▶ **RMM** - Microwave radar with function discrimination: vehicle - pedestrian crossing direction
- ▶ **TEL 2** - Remote control for RMM radar adjustment
- ▶ **BIX LP2** - Self-learning, two-channel mini radio remote control
- ▶ **BIX LP2P** - 433 MHz, two-channel, push-button remote control
- ▶ **LAB 9CS**
- ▶ **LAMP H** - 24 V flashing beacon
- ▶ **XEL 2** - Infra-red photocell for outdoor installation, general use
- ▶ **APS** - Automatic anti-panic system
- ▶ **INVERTER** - Electronic control panel with speed adjustment

Regulations

Use only DITEC accessories and safety devices for automation system installation.

DITEC actuators are CE-marked. They are designed and built in compliance with the safety requirements defined in the Machinery Directive (98/37/EC), Electromagnetic Compatibility Directive (89/336/EEC) and Low-Voltage Directive (73/23/EEC). DITEC S.p.A. reserves the right to make any changes whatsoever in order to upgrade its products.

Ditec products are constantly improved. As a consequence, technical data as listed in this leaflet are not to be considered binding. Further information can be found in our technical manuals, available on the website www.ditec.it



RMM



TEL 2



BIX LP2



BIX LP2P



LAB 9CS



LAMP H



XEL 2



APS



INVERTER



DITEC S.p.A.

Via Mons. Banfi, 3 - 21042 Caronno Pertusella (VA) - ITALY
Tel. +39 02 963911 - Fax +39 02 9650314
www.ditec.it - ditec@ditecva.com



ISO 9001
Cert. n° 0957/1

DITEC BELGIUM
DITEC DEUTSCHLAND
DITEC FRANCE
DITEC SVIZZERA
DITEC AMERICA

LOKEREN
OBERURSEL
PALAISEAU
BALERNA
ORLANDO-FLORIDA-USA

Tel. +32 9 3560051
Tel. +49 6171914150
Tel. +33 1 64532860
Tel. +41 91 6463339
Tel. +1 407 8880699

Fax +32 9 3560052
Fax +49 61719141555
Fax +33 1 64532861
Fax +41 91 6466127
Fax +1 407 8882237

www.ditecbelgium.be
www.ditec-germany.de
www.ditec.fr
www.ditecswiss.ch
www.ditecamerica.com