

Solar Cube

Switch to solar

Solar Cube PV Mounting Solutions

PRODUCT CATALOGUE

2012

www.solarcube.com

GERMANy

Solar Cube GmbH
Edisonstraße 11, 85716
Unterschleissheim
Munich
Phone: +49 89 5708 4105
Fax: +49 89 5708 4168

www.solarcube.com

UNITED STATES

Solar Cube LLC
991 US Highway 22 West
Suite 200
Bridgewater, NJ 08807
Phone: +1 917 720 7620
Phone: +1 201 643 7604

info@solarcube.com

GREECE

Solar Cube Ltd
Strymonos 5,
Votnikos
Athens, 118 55
Phone: +30 210 689 9212
Fax: +30 210 689 9211

Catalogue Edition June 2012

INDIA

Solar Cube India (pvt) Ltd
Corporate Office
R-8, Nehru Enclave, Nehru Place
New Delhi - 110019
Phone : +91-11-41076672

Table of Contents

What we do	3
Open Field PV Rack Mount Systems	
KIVO CR Generation IV Single Pile	5
KIVO CR Generation IV Double Pile.....	7
KIVO CR Generation IV Concrete Foundation.....	9
KIVO FS	11
KIVO TF	13
KIVO SL (Inclination-Mountain Slopes)	15
Roof Top PV Rack Mount Systems	
KIVO FR Single Portrait	19
KIVO FR Double Portrait	21
KIVO IR Corrugated Sheet.....	23
KIVO TR	25
Norm & Standards / Certificates / Warranties.....	27
Contact Information	28

GERMANy

Solar Cube GmbH
Edisonstraße 11, 85716
Unterschleissheim
Munich
Phone: +49 89 5708 4105
Fax: +49 89 5708 4168

www.solarcube.com

UNITED STATES

Solar Cube LLC
991 US Highway 22 West
Suite 200
Bridgewater, NJ 08807
Phone: +1 917 720 7620
Phone: +1 201 643 7604

info@solarcube.com

GREECE

Solar Cube Ltd
Strymonos 5,
Votanikos
Athens, 118 55
Phone: +30 210 689 9212
Fax: +30 210 689 9211

Catalogue Edition June 2012

INDIA

Solar Cube India (pvt) Ltd
Corporate Office
R-8, Nehru Enclave, Nehru Place
New Delhi - 110019
Phone : +91-11-41076672

What we do



Solar Cube focuses on designing mounting equipment for solar energy panels. The company develops sophisticated, patent pending solutions that are of the highest quality and reliability.

Particular emphasis is given to providing solutions that are cost effective and time efficient for the development of Photovoltaic (PV) projects. The focus of every member of the Solar Cube team is to provide the highest quality systems with practical advantages for each unique photovoltaic project.

Solar Cube Mounting Systems offer the following advantages:

- Highest quality level of static strength as well as corrosion resistance.
- Solutions even for difficult terrain and geological situations, ground conditions and/or earthquake areas.
- Static dimensioning according to EUROCODE or even a higher specification requested by customer.
- Customized engineering with optimized material systems at very competitive prices. Readymade or custom designed for individual project requirements.

GERMANy

Solar Cube GmbH
Edisonstraße 11, 85716
Unterschleissheim
Munich
Phone: +49 89 5708 4105
Fax: +49 89 5708 4168

www.solarcube.com

UNITED STATES

Solar Cube LLC
991 US Highway 22 West
Suite 200
Bridgewater, NJ 08807
Phone: +1 917 720 7620
Phone: +1 201 643 7604

info@solarcube.com

GREECE

Solar Cube Ltd
Strymonos 5,
Votanikos
Athens, 118 55
Phone: +30 210 689 9212
Fax: +30 210 689 9211

Catalogue Edition June 2012

INDIA

Solar Cube India (pvt) Ltd
Corporate Office
R-8, Nehru Enclave, Nehru Place
New Delhi - 110019
Phone : +91-11-41076672

Open Field PV Rack Mount Systems

KIVO

PV-OPEN FIELD SYSTEMS

by



GERMANy

Solar Cube GmbH
Edisonstraße 11, 85716
Unterschleissheim
Munich
Phone: +49 89 5708 4105
Fax: +49 89 5708 4168

www.solarcube.com

UNITED STATES

Solar Cube LLC
991 US Highway 22 West
Suite 200
Bridgewater, NJ 08807
Phone: +1 917 720 7620
Phone: +1 201 643 7604

info@solarcube.com

GREECE

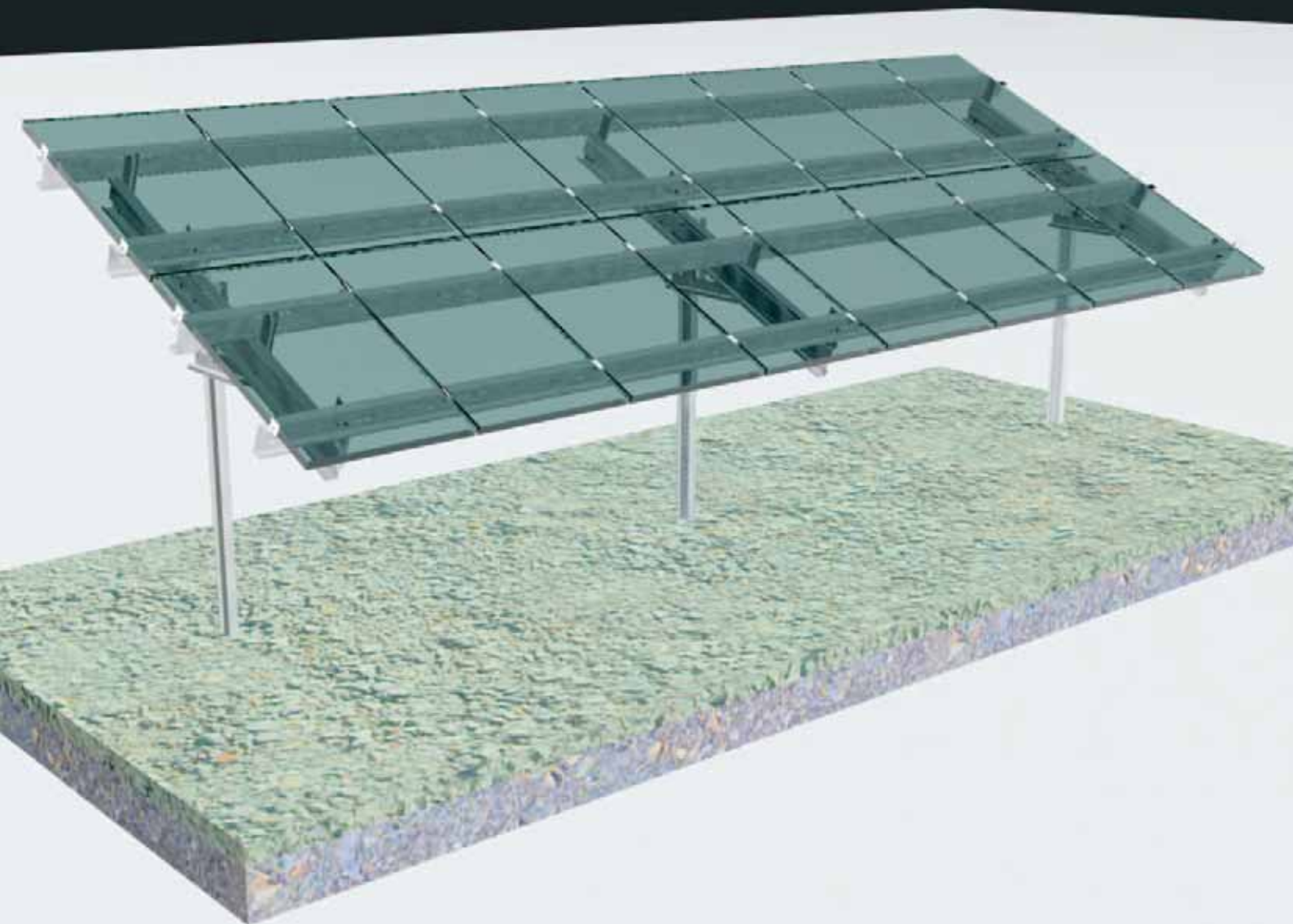
Solar Cube Ltd
Strymonos 5,
Votanikos
Athens, 118 55
Phone: +30 210 689 9212
Fax: +30 210 689 9211

Catalogue Edition June 2012

INDIA

Solar Cube India (pvt) Ltd
Corporate Office
R-8, Nehru Enclave, Nehru Place
New Delhi - 110019
Phone : +91-11-41076672

KIVO CR Generation IV Single Pile



GERMANy

Solar Cube GmbH
Edisonstraße 11, 85716
Unterschleissheim
Munich
Phone: +49 89 5708 4105
Fax: +49 89 5708 4168

www.solarcube.com

UNITED STATES

Solar Cube LLC
991 US Highway 22 West
Suite 200
Bridgewater, NJ 08807
Phone: +1 917 720 7620
Phone: +1 201 643 7604

info@solarcube.com

GREECE

Solar Cube Ltd
Strymonos 5,
Votanikos
Athens, 118 55
Phone: +30 210 689 9212
Fax: +30 210 689 9211

Catalogue Edition June 2012

INDIA

Solar Cube India (pvt) Ltd
Corporate Office
R-8, Nehru Enclave, Nehru Place
New Delhi - 110019
Phone : +91-11-41076672

Product Overview

KIVO CR Generation IV **Single Pile**

Open Field System



Mounting system KIVO CR4 for ground mounted photovoltaic systems, suitable for crystalline & framed thin film p/v modules.

Description

- The mounting system consists of galvanized steel mounting structures, based concrete foundations east to west or north to south positioned
- Each bay consists of a steel braced frame, made of galvanized cold formed steel sections and can accommodate 6 to 8 p/v modules. The span between the ground supports varies between 3000 to 4200mm.
- Horizontal mounting (landscape) and vertical mounting (portrait) are possible on the KIVO CR4.
- Aluminum clamps (middle & end profile, EPDM rubber) are used to fasten the modules.
- P/V module's minimal distance to the ground – 500mm or according to the specifications
- Only M12 screws are used
- Optimized material selection, integrated functions (e.g. cable conduit) and reduced number of single parts ensure quick and easy installation.
- The mounting system is CE certified and suitable for most climate conditions.
- Solutions even for difficult terrain and geological situations, ground conditions and/or earth quake areas are available on request.

Specifications

Application	Ground mounted
Grounding	single pile ramming or drilling and concrete filling
Soil Classes DIN 18300	Soil Classes 3-5 Soil Classes 5-7(drilling)
Material	Cold roll-formed pre galvanized steel profiles according to EN 10147 – S320 + Z, or post galvanized steel profiles, Hot dip Galvanized piles IPE, RHS, Sigma or C section piles according to EN ISO 1461:2009
Tilt Angles	Upon demand from 10 to 40 degrees
Panel arrangement	3-4 rows horizontal mounting(landscape) 1-2 rows vertical mounting(portrait)
Module Compatibility	Framed modules, all available commercial types
Average Installation Rate	Up to 18,6 kWp/man per day
Accessories	Aluminum middle and end clamps: EN AW-6063 T66
Connection type	Grade 8.8 (galvanized) M12 and M8 (clamps) according to DIN933, 125, 9021, 985, 912 EPDM rubber against Electrolytic corrosion
Warranty	20 years
Manufacturing Location	Depending on location of installation site

GERMANy

Solar Cube GmbH
Edisonstraße 11, 85716
Unterschleissheim
Munich
Phone: +49 89 5708 4105
Fax: +49 89 5708 4168

UNITED STATES

Solar Cube LLC
991 US Highway 22 West
Suite 200
Bridgewater, NJ 08807
Phone: +1 917 720 7620
Phone: +1 201 643 7604

GREECE

Solar Cube Ltd
Strymonos 5,
Votanikos
Athens, 118 55
Phone: +30 210 689 9212
Fax: +30 210 689 9211

INDIA

Solar Cube India (pvt) Ltd
Corporate Office
R-8, Nehru Enclave, Nehru Place
New Delhi - 110019
Phone : +91-11-41076672

KIVO CR Generation IV Double Pile



GERMANy

Solar Cube GmbH
Edisonstraße 11, 85716
Unterschleissheim
Munich
Phone: +49 89 5708 4105
Fax: +49 89 5708 4168

www.solarcube.com

UNITED STATES

Solar Cube LLC
991 US Highway 22 West
Suite 200
Bridgewater, NJ 08807
Phone: +1 917 720 7620
Phone: +1 201 643 7604

info@solarcube.com

GREECE

Solar Cube Ltd
Strymonos 5,
Votanikos
Athens, 118 55
Phone: +30 210 689 9212
Fax: +30 210 689 9211

Catalogue Edition June 2012

INDIA

Solar Cube India (pvt) Ltd
Corporate Office
R-8, Nehru Enclave, Nehru Place
New Delhi - 110019
Phone : +91-11-41076672

Product Overview

KIVO CR Generation IV Double Pile

Open Field System



Mounting system KIVO CR4 double pile system, for ground mounted photovoltaic systems, suitable for crystalline & framed thin film p/v modules.

Description

- The mounting system consists of galvanized steel mounting structures, based on pile foundations such as, C, Sigma or RHS. Foundations are rammed to the depth of up to 2 meters into the ground.
- A ramming test is carried on before the installation in order to ensure the ground suitability.
- Each bay consists of a steel braced frame, made of galvanized cold formed steel sections and can accommodate 6 to 8 p/v modules. The span between the ground supports varies between 3000 to 4200mm.
- Horizontal mounting (landscape) and vertical mounting (portrait) are possible on the KIVO CR4.
- Aluminum clamps (middle & end profile, EPDM rubber) are used to fasten the modules.
- P/V module's minimal distance to the ground – 500mm or up to specifications.
- Only M12 screws are used.
- Optimized material selection, integrated functions (e.g. cable conduit) and reduced number of single parts ensure quick and easy installation.
- The mounting system is CE certified and suitable for the climate conditions of Europe.
- Solutions even for difficult terrain and geological situations, ground conditions and/or earth quake areas are available on request.

Specifications

Application	Ground mounted
Grounding	Double pile ramming or drilling and concrete filling
Soil Classes DIN 18300	Soil Classes 1-7
Material	Cold roll-formed pre galvanized steel profiles according to EN 10147 – S320 + Z, or post galvanized steel profiles, Hot dip Galvanized piles IPE, RHS, Sigma or C section piles according to EN ISO 1461:2009
Tilt Angles	Upon demand from 10 to 40 degrees
Panel arrangement	3-4 or more rows horizontal mounting (landscape) Up to 3 rows vertical mounting (portrait)
Module Compatibility	Framed modules, all available commercial types
Average Installation Rate	Up to 16 kWp/man per day
Accessories	Aluminum middle and end clamps: EN AW-6063 T66
Connection type	Grade 8.8 (galvanized) M12 and M8 (clamps) according to DIN933, 125, 9021, 985, 912 EPDM rubber against Electrolytic corrosion
Warranty	20 years
Manufacturing Location	Depending on location of installation site

GERMANy

Solar Cube GmbH
Edisonstraße 11, 85716
Unterschleissheim
Munich
Phone: +49 89 5708 4105
Fax: +49 89 5708 4168

www.solarcube.com

UNITED STATES

Solar Cube LLC
991 US Highway 22 West
Suite 200
Bridgewater, NJ 08807
Phone: +1 917 720 7620
Phone: +1 201 643 7604

info@solarcube.com

GREECE

Solar Cube Ltd
Strymonos 5,
Votanikos
Athens, 118 55
Phone: +30 210 689 9212
Fax: +30 210 689 9211

Catalogue Edition June 2012

INDIA

Solar Cube India (pvt) Ltd
Corporate Office
R-8, Nehru Enclave, Nehru Place
New Delhi - 110019
Phone : +91-11-41076672

KIVO CR Generation IV Concrete Foundation



GERMANy

Solar Cube GmbH
Edisonstraße 11, 85716
Unterschleissheim
Munich
Phone: +49 89 5708 4105
Fax: +49 89 5708 4168

www.solarcube.com

UNITED STATES

Solar Cube LLC
991 US Highway 22 West
Suite 200
Bridgewater, NJ 08807
Phone: +1 917 720 7620
Phone: +1 201 643 7604

info@solarcube.com

GREECE

Solar Cube Ltd
Strymonos 5,
Votanikos
Athens, 118 55
Phone: +30 210 689 9212
Fax: +30 210 689 9211

Catalogue Edition June 2012

INDIA

Solar Cube India (pvt) Ltd
Corporate Office
R-8, Nehru Enclave, Nehru Place
New Delhi - 110019
Phone : +91-11-41076672

Product Overview

KIVO CR Generation IV Concrete Foundation

Open Field System



Mounting system KIVO CR4 concrete foundation system, for ground mounted photovoltaic systems, suitable for crystalline & framed thin film p/v modules when ramming is not possible.

Description

- The mounting system consists of galvanized steel mounting structures, based concrete foundations east to west or north to south positioned
- Each bay consists of a steel braced frame, made of galvanized cold formed steel sections and can accommodate 6 to 8 p/v modules. The span between the ground supports varies between 3000 to 4200mm.
- Horizontal mounting (landscape) and vertical mounting (portrait) are possible on the KIVO CR4.
- Aluminum clamps (middle & end profile, EPDM rubber) are used to fasten the modules.
- P/V module's minimal distance to the ground – 500mm or according to the specifications
- Only M12 screws are used.
- Optimized material selection, integrated functions (e.g. cable conduit) and reduced number of single parts ensure quick and easy installation.
- The mounting system is CE certified and suitable for the climate conditions of Europe.
- Solutions even for difficult terrain and geological situations, ground conditions and/or earth quake areas are available on request.

Specifications

Application	Ground mounted
Grounding	Concrete block foundation
Soil Classes DIN 18300	High corrosive soil (Ph<6 or Ph>9) or upon demand
Material	Cold roll-formed pre galvanized steel profiles according to EN 10147– S320 + Z, or post galvanized steel profiles
Tilt Angles	Upon demand from 10 to 40 degrees
Panel arrangement	3-4 or more rows horizontal mounting (landscape) Up to 3 rows vertical mounting(portrait)
Module Compatibility	Framed modules, all available commercial types
Average Installation Rate	Up to 12 kWp/man per day
Accessories	Aluminum middle and end clamps EN AW-6063 T66
Connection type	Grade 8.8 (galvanized) M12 and M8 (clamps) according to DIN933, 125, 9021, 985, 912 EPDM rubber against Electrolytic corrosion
Warranty	20 years
Manufacturing Location	Depending on location of installation site

GERMANy

Solar Cube GmbH
Edisonstraße 11, 85716
Unterschleissheim
Munich
Phone: +49 89 5708 4105
Fax: +49 89 5708 4168

www.solarcube.com

UNITED STATES

Solar Cube LLC
991 US Highway 22 West
Suite 200
Bridgewater, NJ 08807
Phone: +1 917 720 7620
Phone: +1 201 643 7604

info@solarcube.com

GREECE

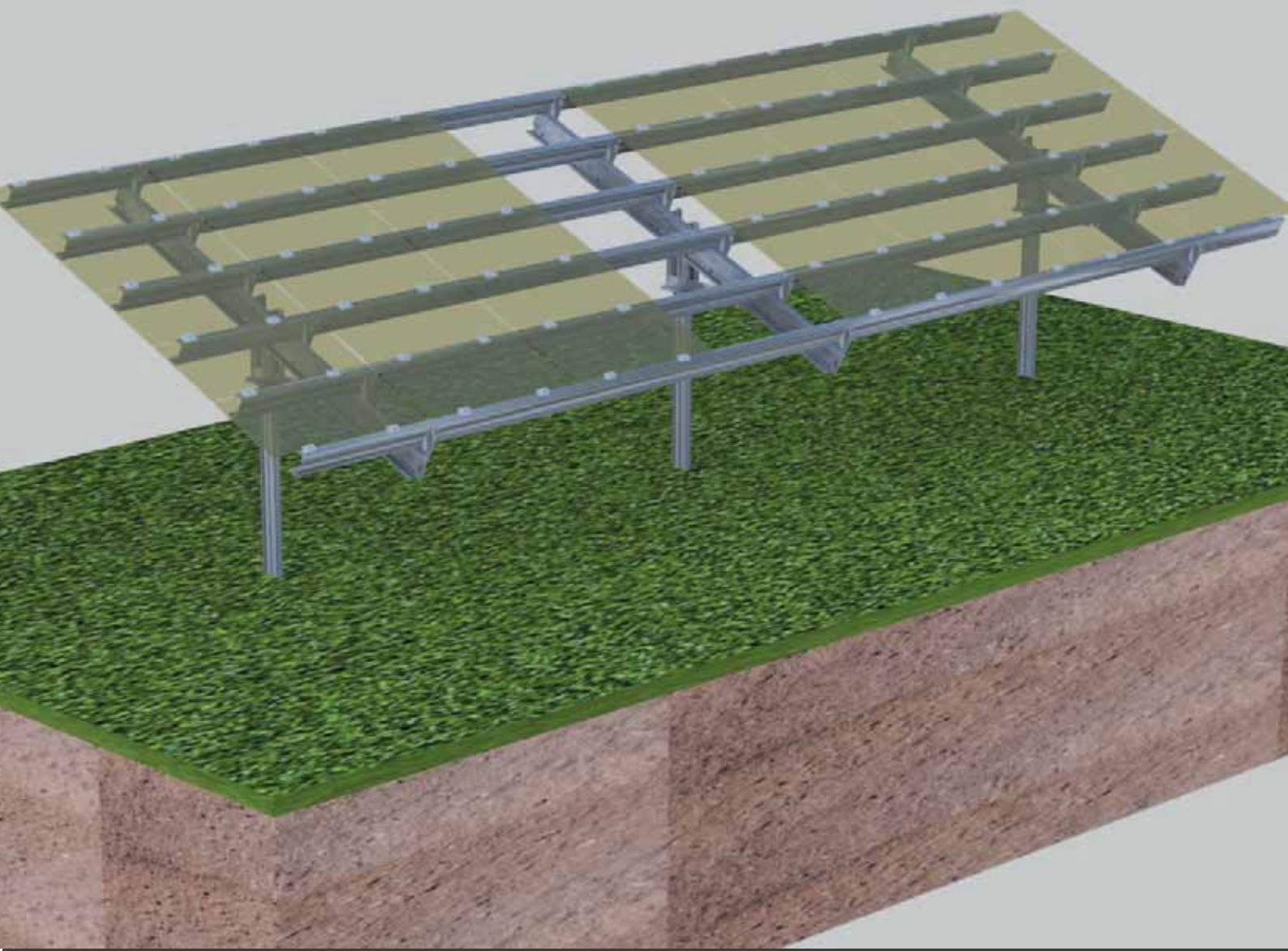
Solar Cube Ltd
Strymonos 5,
Votanikos
Athens, 118 55
Phone: +30 210 689 9212
Fax: +30 210 689 9211

Catalogue Edition June 2012

INDIA

Solar Cube India (pvt) Ltd
Corporate Office
R-8, Nehru Enclave, Nehru Place
New Delhi - 110019
Phone : +91-11-41076672

KIVO FS



GERMANy

Solar Cube GmbH
Edisonstraße 11, 85716
Unterschleissheim
Munich
Phone: +49 89 5708 4105
Fax: +49 89 5708 4168

www.solarcube.com

UNITED STATES

Solar Cube LLC
991 US Highway 22 West
Suite 200
Bridgewater, NJ 08807
Phone: +1 917 720 7620
Phone: +1 201 643 7604

info@solarcube.com

GREECE

Solar Cube Ltd
Strymonos 5,
Votanikos
Athens, 118 55
Phone: +30 210 689 9212
Fax: +30 210 689 9211

Catalogue Edition June 2012

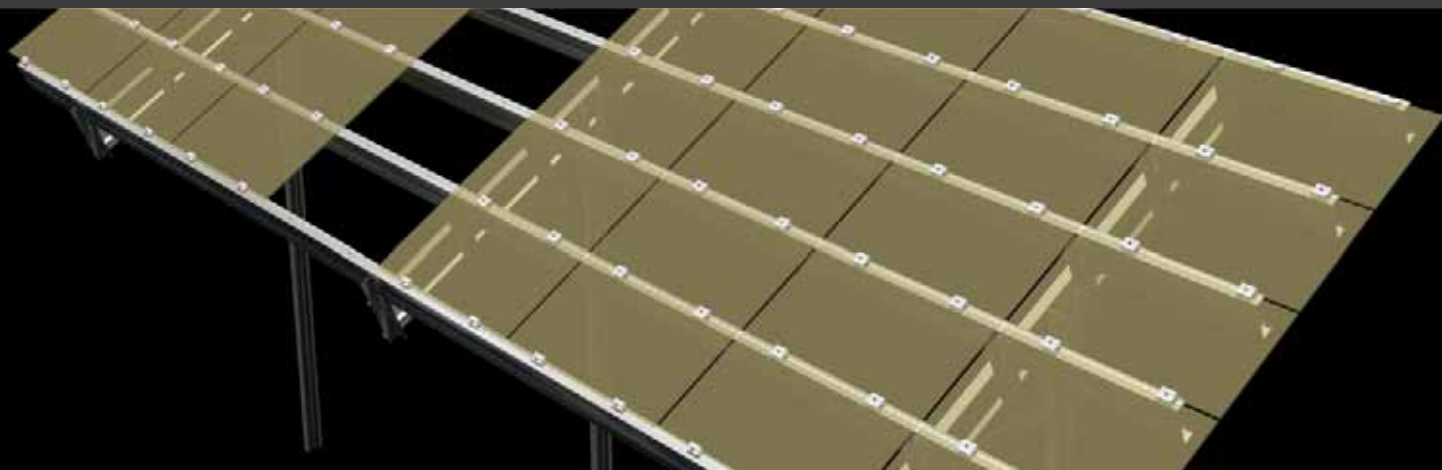
INDIA

Solar Cube India (pvt) Ltd
Corporate Office
R-8, Nehru Enclave, Nehru Place
New Delhi - 110019
Phone : +91-11-41076672

Product Overview

KIVO FS

Open Field System



Mounting system KIVO FS for ground mounted photovoltaic systems is suitable for First Solar thin film modules.

Description

- The mounting system consists of galvanized steel mounting structures, based on pile foundations such as IPE, C, Sigma or RHS.
- Foundations are rammed to the depth of up to 2 meters into the ground.
- A ramming test is carried on before the installation in order to ensure the ground suitability.
- Each bay consists of a steel braced frame, made of galvanized cold formed steel sections and can accommodate 6 to 8 p/v modules. The span between the ground supports varies between 3000 to 4200mm.
- Horizontal mounting (landscape) and vertical mounting (portrait) are possible on the KIVO FS
- Aluminum clamps (middle & end profile, EPDM rubber) are used to fasten the modules.
- P/V module's minimal distance to the ground – 500mm, or upon demand.
- Only M12 screws are used.
- Optimized material selection, integrated functions (e.g. cable conduit) and reduced number of single parts ensure quick and easy installation.
- The mounting system is CE certified and suitable for the climate conditions of Europe.
- Solutions even for difficult terrain and geological situations, ground conditions and/or earth quake areas are available on request.

Specifications

Application	Ground mounted
Grounding	single / double pile ramming, drilling / concrete filling or concrete foundations
Soil Classes DIN 18300	Soil Classes 3-7 single pile (ramming) Soil Classes 5-7 single pile (drilling) Soil Classes 1-7 double pile High corrosive soil (Ph<6 or Ph>9) with concrete foundations
Material	Cold roll-formed pre galvanized steel profiles according to EN 10147 – S320 + Z, or post galvanized steel profiles, Hot dip Galvanized piles IPE, RHS, Sigma or C section piles according to EN ISO 1461:2009
Tilt Angles	Upon demand from 10 to 40 degrees
Panel arrangement	2-10 rows horizontal mounting depending on foundation type
Module Compatibility	First Solar PV modules
Average Installation Rate	Up to 12 kWp/man per day
Accessories	Certified Aluminum clamps according to module specifications
Connection type	Grade 8.8 (galvanized) M12 and M8 (clamps) according to DIN933, 125, 9021, 985, 912 EPDM rubber against Electrolytic corrosion
Warranty	20 years
Manufacturing Location	Depending on location of installation site

GERMANy

Solar Cube GmbH
Edisonstraße 11, 85716
Unterschleissheim
Munich
Phone: +49 89 5708 4105
Fax: +49 89 5708 4168

UNITED STATES

Solar Cube LLC
991 US Highway 22 West
Suite 200
Bridgewater, NJ 08807
Phone: +1 917 720 7620
Phone: +1 201 643 7604

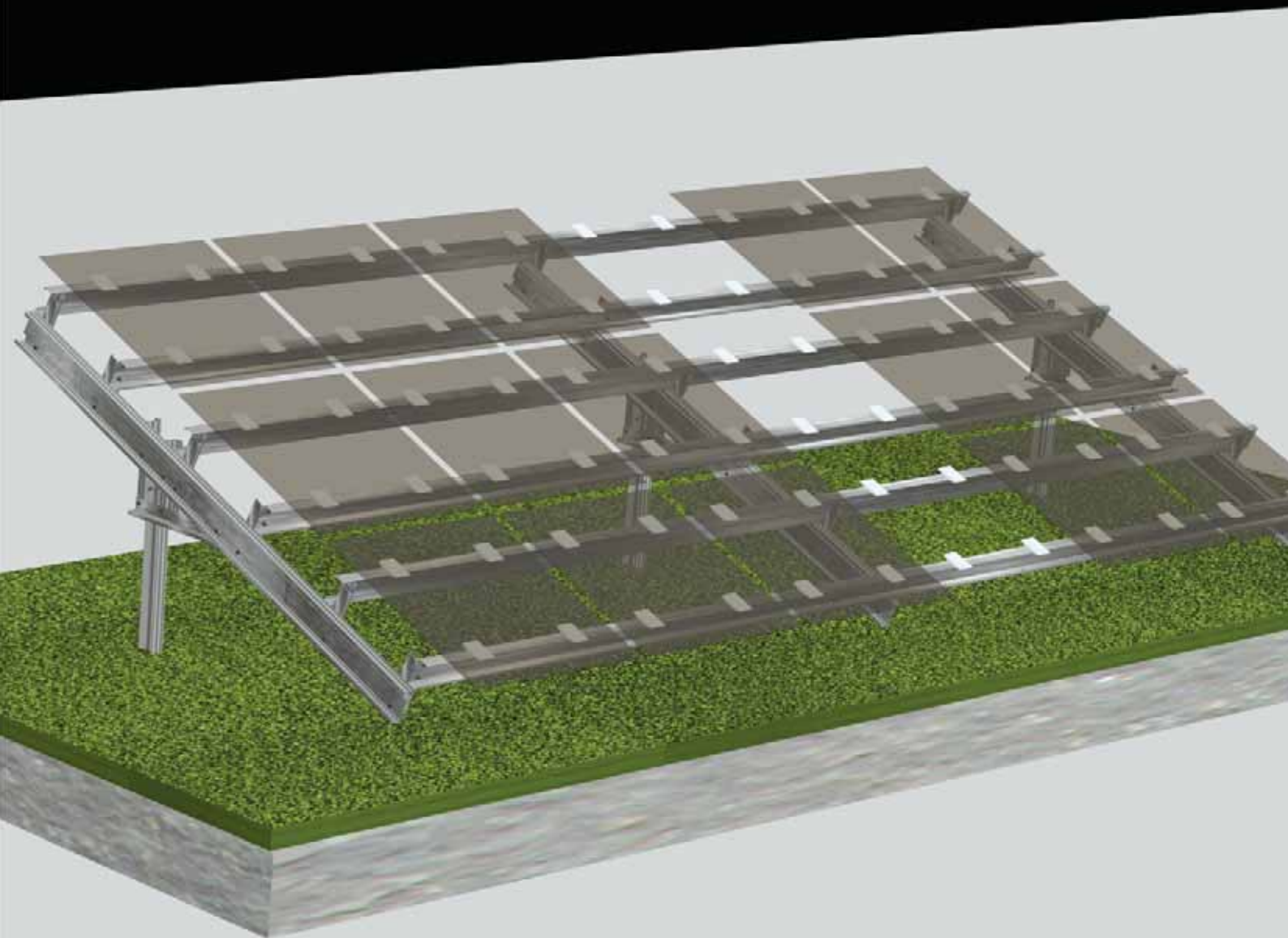
GREECE

Solar Cube Ltd
Strymonos 5,
Votnikos
Athens, 118 55
Phone: +30 210 689 9212
Fax: +30 210 689 9211

INDIA

Solar Cube India (pvt) Ltd
Corporate Office
R-8, Nehru Enclave, Nehru Place
New Delhi - 110019
Phone : +91-11-41076672

KIVO TF



GERMANy

Solar Cube GmbH
Edisonstraße 11, 85716
Unterschleissheim
Munich
Phone: +49 89 5708 4105
Fax: +49 89 5708 4168

www.solarcube.com

UNITED STATES

Solar Cube LLC
991 US Highway 22 West
Suite 200
Bridgewater, NJ 08807
Phone: +1 917 720 7620
Phone: +1 201 643 7604

info@solarcube.com

GREECE

Solar Cube Ltd
Strymonos 5,
Votánikos
Athens, 118 55
Phone: +30 210 689 9212
Fax: +30 210 689 9211

Catalogue Edition June 2012

INDIA

Solar Cube India (pvt) Ltd
Corporate Office
R-8, Nehru Enclave, Nehru Place
New Delhi - 110019
Phone : +91-11-41076672

Product Overview

KIVO TF

Open Field System



Mounting system KIVO TF for ground mounted photovoltaic systems is suitable for frameless thin film modules.

Description

- The mounting system consists of galvanized steel mounting structures, based on pile foundations such as IPE, C, Ø or RHS.
- Foundations are rammed to the depth of up to 2 meters into the ground.
- A ramming test is carried on before the installation in order to ensure the ground suitability.
- Each bay consists of a steel braced frame, made of galvanized cold formed steel sections and can accommodate 6 to 8 p/v modules. The span between the ground supports varies between 3000 to 4200mm.
- Horizontal mounting (landscape) and vertical mounting (portrait) are possible on the KIVO TF.
- Aluminum clamps (middle & end profile, EPDM rubber) are used to fasten the modules.
- P/V module's minimal distance to the ground – 500mm or up to the specifications.
- Optimized material selection, integrated functions (e.g. cable conduit) and reduced number of single parts ensure quick and easy installation.
- Only M12 screws are used.
- The mounting system is CE certified and suitable for the climate conditions of Europe.
- Solutions even for difficult terrain and geological situations, ground conditions and/or earth quake areas are available on request.

Specifications

Application	Ground mounted
Grounding	single / double pile, drilling / concrete filling or concrete foundations
Soil Classes DIN 18300	Soil Classes 3-7 single pile (ramming) Soil Classes 5-7 single pile (drilling) Soil Classes 1-7 double pile High corrosive soil (Ph<6 or Ph>9) with concrete foundations
Material	Cold roll-formed pre galvanized steel profiles according to EN 10147 – S320 + Z, or post galvanized steel profiles, Hot dip Galvanized piles IPE, RHS, Sigma or C section piles according to EN ISO 1461:2009
Tilt Angles	Upon demand from 10 to 40 degrees
Panel arrangement	3-4 or more rows horizontal mounting (landscape) Up to 3 rows vertical mounting (portrait) depending on foundation type
Module Compatibility	Frameless thin film modules, all commercially available types
Average Installation Rate	Up to 12 kWp/man per day
Accessories	Certified Aluminum clamps or back rails according to module specifications
Connection type	Grade 8.8 (galvanized) M12 and M8 (clamps) according to DIN933, 125, 9021, 985, 912 EPDM rubber against Electrolytic corrosion
Manufacturing Location	Depending on location of installation site

GERMANy

Solar Cube GmbH
Edisonstraße 11, 85716
Unterschleissheim
Munich
Phone: +49 89 5708 4105
Fax: +49 89 5708 4168

www.solarcube.com

UNITED STATES

Solar Cube LLC
991 US Highway 22 West
Suite 200
Bridgewater, NJ 08807
Phone: +1 917 720 7620
Phone: +1 201 643 7604

info@solarcube.com

GREECE

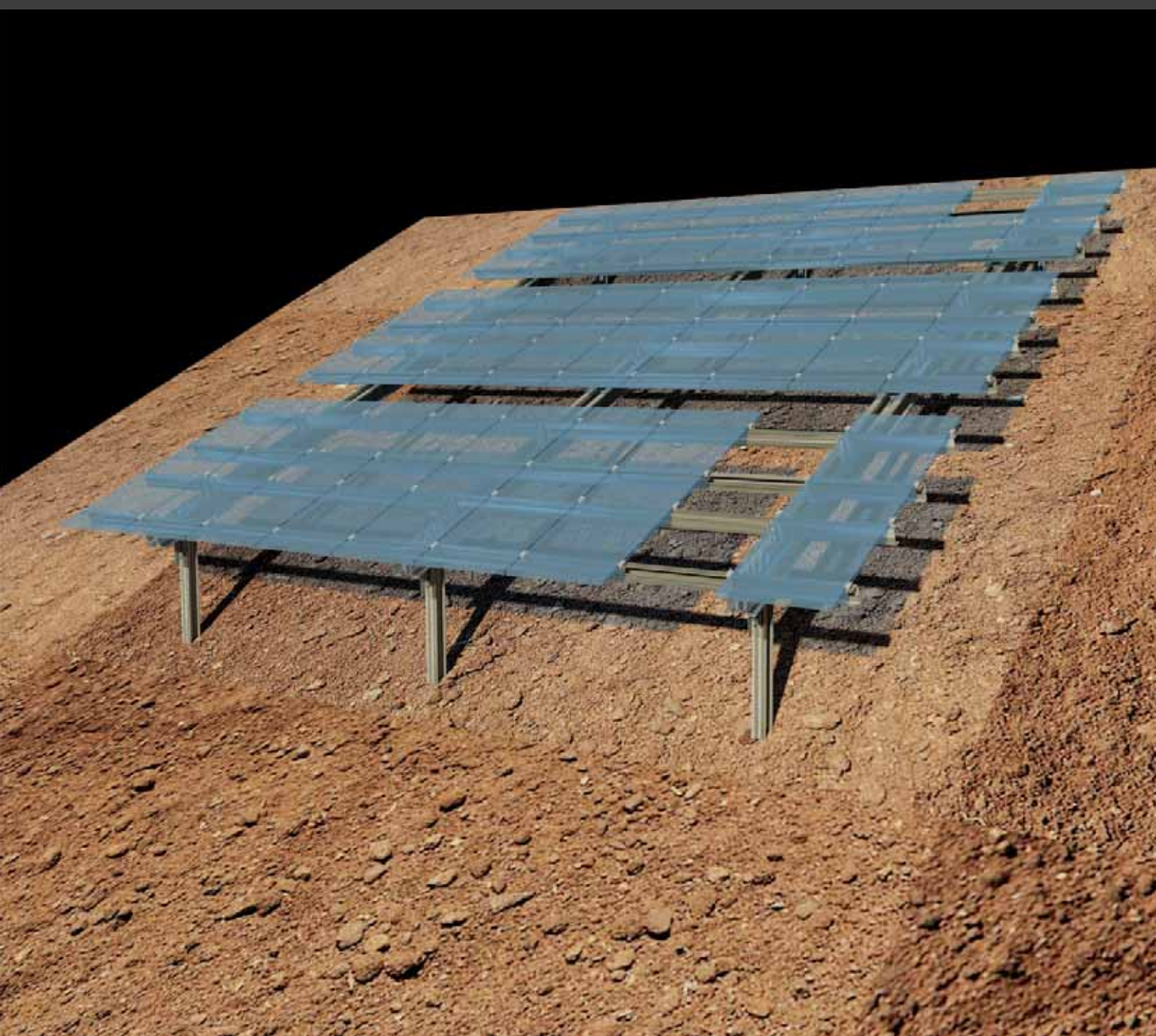
Solar Cube Ltd
Strymonos 5,
Votanikos
Athens, 118 55
Phone: +30 210 689 9212
Fax: +30 210 689 9211

Catalogue Edition June 2012

INDIA

Solar Cube India (pvt) Ltd
Corporate Office
R-8, Nehru Enclave, Nehru Place
New Delhi - 110019
Phone : +91-11-41076672

KIVO SL (Inclination-Mountain Slopes)



GERMANy

Solar Cube GmbH
Edisonstraße 11, 85716
Unterschleissheim
Munich
Phone: +49 89 5708 4105
Fax: +49 89 5708 4168

www.solarcube.com

UNITED STATES

Solar Cube LLC
991 US Highway 22 West
Suite 200
Bridgewater, NJ 08807
Phone: +1 917 720 7620
Phone: +1 201 643 7604

info@solarcube.com

GREECE

Solar Cube Ltd
Strymonos 5,
Votanikos
Athens, 118 55
Phone: +30 210 689 9212
Fax: +30 210 689 9211

Catalogue Edition June 2012

INDIA

Solar Cube India (pvt) Ltd
Corporate Office
R-8, Nehru Enclave, Nehru Place
New Delhi - 110019
Phone : +91-11-41076672

Product Overview

KIVO SL (Inclination-Mountain Slopes)

Open Field System



Mounting system KIVO SL for ground mounted photovoltaic systems is suitable for installations on mountain slopes. Minimizing earthworks and foundation works.

Description

- The mounting system consists of galvanized steel mounting structures, based on pile foundations such as IPE or RHS or concrete foundations.
- Each bay consists of a steel braced frame, made of galvanized cold formed steel sections configuring "tables" of up to 50 kWp total rated power of p/v module in multiple portrait or multiple landscape arrangement.
- Each structure is customized according to the project terrain and specifications and designed carefully minimizing earthworks using 3D Geographical Display of the terrain surface.
- Optimized material selection, integrated functions (e.g. cable conduit) and reduced number of single parts ensure quick and easy installation.
- The mounting system is CE certified and suitable for the climate conditions of Europe.
- Solutions even for difficult terrain and geological situations, ground conditions and/or earth quake areas are available on request.

Specifications

Application	Ground mounted for mountain slopes Grounding Pile / ramming or drilling or concrete foundation
Soil Classes DIN 18300	Soil Classes 5-7 Heavy inclination areas
Material	Cold roll-formed pre galvanized steel profiles according to EN 10147 – S320 + Z , or post galvanized steel profiles, Hot dip Galvanized piles IPE, RHS, Sigma or C section piles according to EN ISO 1461:2009
Tilt Angles	upon demand from 10 to 40 degrees or following the slopes angle
Panel arrangement	Multiple landscape or multiple portrait
Module Compatibility	Most available commercial types Polly or thin film modules
Average Installation Rate	Depending on the project
Accessories	Aluminum middle and end clamps: EN AW-6063 T66
Connection type	Grade 8.8 (galvanized) M12 and M8 (clamps) according to DIN933, 125, 9021, 985, 912 EPDM rubber against Electrolytic corrosion
Warranty	20 years
Manufacturing Location	Depending on location of installation site

GERMANy

Solar Cube GmbH
Edisonstraße 11, 85716
Unterschleissheim
Munich
Phone: +49 89 5708 4105
Fax: +49 89 5708 4168

UNITED STATES

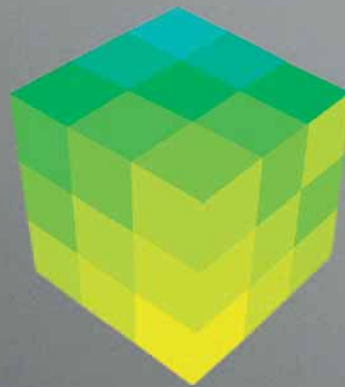
Solar Cube LLC
991 US Highway 22 West
Suite 200
Bridgewater, NJ 08807
Phone: +1 917 720 7620
Phone: +1 201 643 7604

GREECE

Solar Cube Ltd
Strymonos 5,
Votanikos
Athens, 118 55
Phone: +30 210 689 9212
Fax: +30 210 689 9211

INDIA

Solar Cube India (pvt) Ltd
Corporate Office
R-8, Nehru Enclave, Nehru Place
New Delhi - 110019
Phone : +91-11-41076672



Switch to solar

GERMANy

Solar Cube GmbH
Edisonstraße 11, 85716
Unterschleissheim
Munich
Phone: +49 89 5708 4105
Fax: +49 89 5708 4168

www.solarcube.com

UNITED STATES

Solar Cube LLC
991 US Highway 22 West
Suite 200
Bridgewater, NJ 08807
Phone: +1 917 720 7620
Phone: +1 201 643 7604

info@solarcube.com

GREECE

Solar Cube Ltd
Strymonos 5,
Votanikos
Athens, 118 55
Phone: +30 210 689 9212
Fax: +30 210 689 9211

Catalogue Edition June 2012

INDIA

Solar Cube India (pvt) Ltd
Corporate Office
R-8, Nehru Enclave, Nehru Place
New Delhi - 110019
Phone : +91-11-41076672

Roof Top PV Rack Mount Systems

KIVO

ROOF TOP PV RACK MOUNT SOLUTIONS

By
Solar  Cube

GERMANy

Solar Cube GmbH
Edisonstraße 11, 85716
Unterschleissheim
Munich
Phone: +49 89 5708 4105
Fax: +49 89 5708 4168

www.solarcube.com

UNITED STATES

Solar Cube LLC
991 US Highway 22 West
Suite 200
Bridgewater, NJ 08807
Phone: +1 917 720 7620
Phone: +1 201 643 7604

info@solarcube.com

GREECE

Solar Cube Ltd
Strymonos 5,
Votanikos
Athens, 118 55
Phone: +30 210 689 9212
Fax: +30 210 689 9211

Catalogue Edition June 2012

INDIA

Solar Cube India (pvt) Ltd
Corporate Office
R-8, Nehru Enclave, Nehru Place
New Delhi - 110019
Phone: +91-11-41076672

KIVO FR Single Portrait



GERMANy

Solar Cube GmbH
Edisonstraße 11, 85716
Unterschleissheim
Munich
Phone: +49 89 5708 4105
Fax: +49 89 5708 4168

www.solarcube.com

UNITED STATES

Solar Cube LLC
991 US Highway 22 West
Suite 200
Bridgewater, NJ 08807
Phone: +1 917 720 7620
Phone: +1 201 643 7604

info@solarcube.com

GREECE

Solar Cube Ltd
Strymonos 5,
Votanikos
Athens, 118 55
Phone: +30 210 689 9212
Fax: +30 210 689 9211

Catalogue Edition June 2012

INDIA

Solar Cube India (pvt) Ltd
Corporate Office
R-8, Nehru Enclave, Nehru Place
New Delhi - 110019
Phone : +91-11-41076672

Product Overview

KIVO FR Single Portrait

Roof Top System



Roof Mounted Photovoltaic Structures for flat roof installations, for all available modules.

Description

- All KIVO roof components are made of high quality materials (cold roll formed pre-galvanized steel profiles) and can be applied to almost every type of roofing.
- KIVO FR provides an easy and quick way for a flat roof installation. Mounted by anchoring the support structure to the roof surface with chemical or mechanical anchors.

Specifications

Application	Flat roofs
Anchoring	Anchoring to the roof
Material	Cold roll-formed pre galvanized steel profiles according to EN 10147 – S320 + Z, or post galvanized steel profiles
Tilt Angles	upon demand from 5 to 30 degrees
Panel arrangement	Single portrait
Module Compatibility	all available commercial types
Average Installation Rate	Up to 20 kWp/man per day
Accessories	Aluminum middle and end clamps: EN AW-6063 T66
Connection type	Grade 8.8 (galvanized) M12 and M8 (clamps) according to DIN933, 125, 9021, 985, 912 EPDM rubber against Electrolytic corrosion
Warranty	20 years
Manufacturing Location	Depending on location of installation site

GERMANy

Solar Cube GmbH
Edisonstraße 11, 85716
Unterschleissheim
Munich
Phone: +49 89 5708 4105
Fax: +49 89 5708 4168

www.solarcube.com

UNITED STATES

Solar Cube LLC
991 US Highway 22 West
Suite 200
Bridgewater, NJ 08807
Phone: +1 917 720 7620
Phone: +1 201 643 7604

info@solarcube.com

GREECE

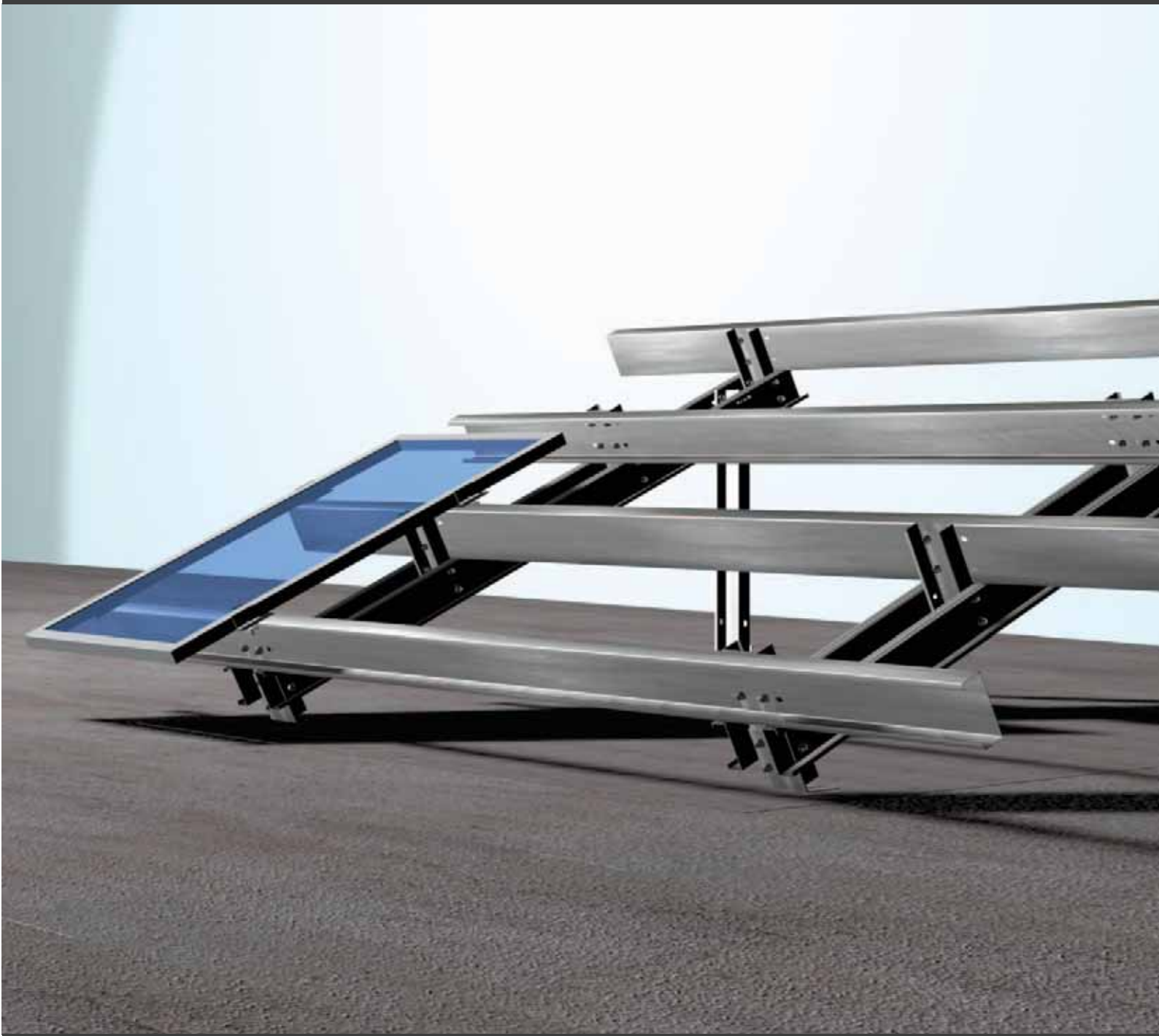
Solar Cube Ltd
Strymonos 5,
Votanikos
Athens, 118 55
Phone: +30 210 689 9212
Fax: +30 210 689 9211

Catalogue Edition June 2012

INDIA

Solar Cube India (pvt) Ltd
Corporate Office
R-8, Nehru Enclave, Nehru Place
New Delhi - 110019
Phone : +91-11-41076672

KIVO FR Double Portrait



GERMANy

Solar Cube GmbH
Edisonstraße 11, 85716
Unterschleissheim
Munich
Phone: +49 89 5708 4105
Fax: +49 89 5708 4168

www.solarcube.com

UNITED STATES

Solar Cube LLC
991 US Highway 22 West
Suite 200
Bridgewater, NJ 08807
Phone: +1 917 720 7620
Phone: +1 201 643 7604

info@solarcube.com

GREECE

Solar Cube Ltd
Strymonos 5,
Votanikos
Athens, 118 55
Phone: +30 210 689 9212
Fax: +30 210 689 9211

Catalogue Edition June 2012

INDIA

Solar Cube India (pvt) Ltd
Corporate Office
R-8, Nehru Enclave, Nehru Place
New Delhi - 110019
Phone: +91-11-41076672

Product Overview

KIVO FR Double Portrait

Roof Top System



Roof Mounted Photovoltaic Structures for flat roof installations, for all available modules.

Description

- All KIVO roof components are made of high quality materials (cold roll formed pre-galvanized steel profiles) and can be applied to almost every type of roofing.
- KIVO FR provides an easy and quick way for a flat roof installation. Mounted by anchoring the support structure to the roof surface with chemical or mechanical anchors.

Specifications

Application	Flat roofs
Anchoring	Anchoring to the roof
Material	Cold roll-formed pre galvanized steel profiles according to EN 10147 – S320 + Z, or post galvanized steel profiles
Tilt Angles	upon demand from 5 to 30 degrees
Panel arrangement	Double portrait
Module Compatibility	all available commercial types
Average Installation Rate	Up to 20 kWp/man per day
Accessories	Aluminum middle and end clamps: EN AW- 6063 T66
Connection type	Grade 8.8 (galvanized) M12 and M8 (clamps) according to DIN933, 125, 9021, 985, 912 EPDM rubber against Electrolytic corrosion
Warranty	20 years
Manufacturing Location	Depending on location of installation site

GERMANp

Solar Cube GmbH
Edisonstraße 11, 85716
Unterschleissheim
Munich
Phone: +49 89 5708 4105
Fax: +49 89 5708 4168

UNITED STATES

Solar Cube LLC
991 US Highway 22 West
Suite 200
Bridgewater, NJ 08807
Phone: +1 917 720 7620
Phone: +1 201 643 7604

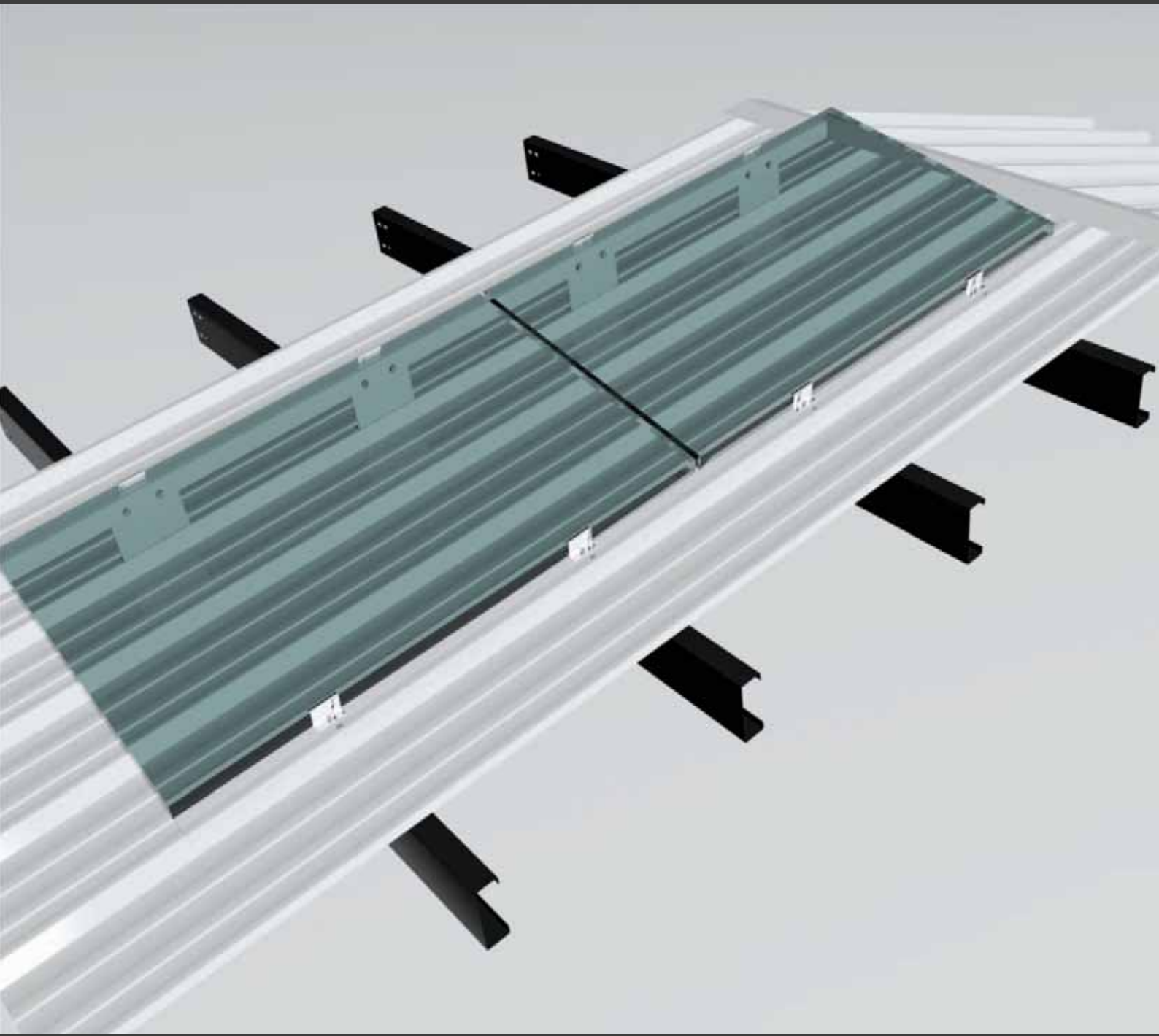
GREECE

Solar Cube Ltd
Strymonos 5,
Votanikos
Athens, 118 55
Phone: +30 210 689 9212
Fax: +30 210 689 9211

INDIA

Solar Cube India (pvt) Ltd
Corporate Office
R-8, Nehru Enclave, Nehru Place
New Delhi - 110019
Phone : +91-11-41076672

KIVO IR Corrugated Sheet



GERMANy

Solar Cube GmbH
Edisonstraße 11, 85716
Unterschleissheim
Munich
Phone: +49 89 5708 4105
Fax: +49 89 5708 4168

www.solarcube.com

UNITED STATES

Solar Cube LLC
991 US Highway 22 West
Suite 200
Bridgewater, NJ 08807
Phone: +1 917 720 7620
Phone: +1 201 643 7604

info@solarcube.com

GREECE

Solar Cube Ltd
Strymonos 5,
Votanikos
Athens, 118 55
Phone: +30 210 689 9212
Fax: +30 210 689 9211

Catalogue Edition June 2012

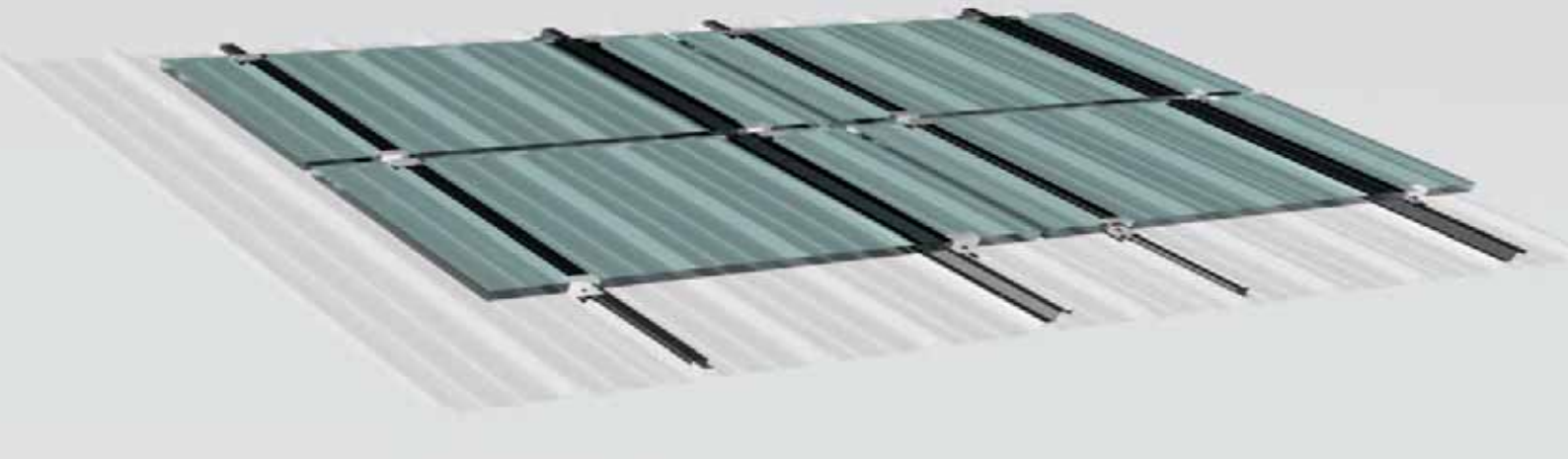
INDIA

Solar Cube India (pvt) Ltd
Corporate Office
R-8, Nehru Enclave, Nehru Place
New Delhi - 110019
Phone : +91-11-41076672

Product Overview

KIVO IR Corrugated Sheet

Roof Top System



Roof Mounted Photovoltaic Structures for flat roof installations, for all available modules.

Description

- All KIVO roof components are made of high quality materials (cold roll formed pre-galvanized steel profiles) and can be applied to almost every type of roofing.
- KIVO FR provides an easy and quick way for a flat roof installation. Mounted by anchoring the support structure to the roof surface with chemical or mechanical anchors.

Specifications

Application	Trapezoidal -corrugated sheet roofs
Grounding	Anchoring to the main structure of the building roof
Material	Cold roll-formed pre galvanized steel profiles according to EN 10147 – S320 +Z, or post galvanized steel profiles
Tilt Angles	Following the roof inclination or upon demand
Panel arrangement	Multiple portrait or landscape
Module Compatibility	all available commercial types
Average Installation Rate	Up to 30 kWp/man per day
Accessories	Aluminum middle and end clamps: EN AW-6063 T66
Connection type	Grade 8.8 (galvanized) M12 and M8 (clamps) according to DIN933, 125, 9021, 985, 912 EPDM rubber against Electrolytic corrosion
Warranty	20 years
Manufacturing Location	Depending on location of installation site

GERMANy

Solar Cube GmbH
Edisonstraße 11, 85716
Unterschleissheim
Munich
Phone: +49 89 5708 4105
Fax: +49 89 5708 4168

www.solarcube.com

UNITED STATES

Solar Cube LLC
991 US Highway 22 West
Suite 200
Bridgewater, NJ 08807
Phone: +1 917 720 7620
Phone: +1 201 643 7604

info@solarcube.com

GREECE

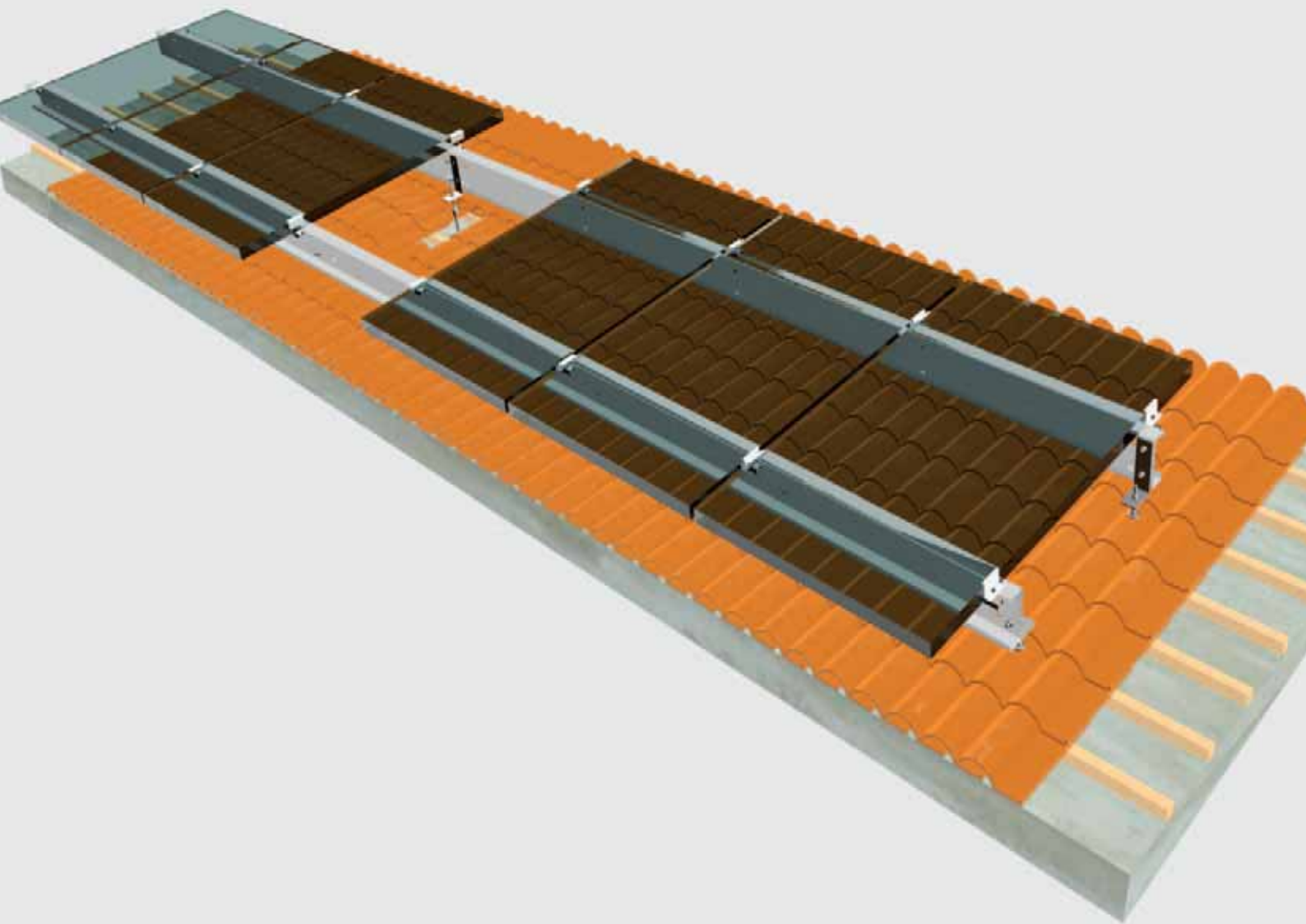
Solar Cube Ltd
Strymonos 5,
Votanikos
Athens, 118 55
Phone: +30 210 689 9212
Fax: +30 210 689 9211

Catalogue Edition June 2012

INDIA

Solar Cube India (pvt) Ltd
Corporate Office
R-8, Nehru Enclave, Nehru Place
New Delhi - 110019
Phone : +91-11-41076672

KIVO TR



GERMANy

Solar Cube GmbH
Edisonstraße 11, 85716
Unterschleissheim
Munich
Phone: +49 89 5708 4105
Fax: +49 89 5708 4168

www.solarcube.com

UNITED STATES

Solar Cube LLC
991 US Highway 22 West
Suite 200
Bridgewater, NJ 08807
Phone: +1 917 720 7620
Phone: +1 201 643 7604

info@solarcube.com

GREECE

Solar Cube Ltd
Strymonos 5,
Votanikos
Athens, 118 55
Phone: +30 210 689 9212
Fax: +30 210 689 9211

Catalogue Edition June 2012

INDIA

Solar Cube India (pvt) Ltd
Corporate Office
R-8, Nehru Enclave, Nehru Place
New Delhi - 110019
Phone : +91-11-41076672

Product Overview

KIVO TR Tiled Roof System

Roof Top System



Roof Mounted Photovoltaic Structures for flat roof installations, for all available modules.

Description

- All KIVO roof components are made of high quality materials (cold roll formed pre-galvanized steel profiles) and can be applied to almost every type of roofing.
- KIVO FR provides an easy and quick way for a flat roof installation. Mounted by anchoring the support structure to the roof surface with chemical or mechanical anchors.

Specifications

Application	Flat roofs
Anchoring on the roof	Anchoring on concrete roof or on the purlins
Material	Cold roll-formed pre galvanized steel profiles according to EN 10147 – S320 + Z, or post galvanized steel profiles
Tilt Angles	Following the roof's inclination
Panel arrangement	Multiple portrait or landscape
Module Compatibility	All available commercial types
Average Installation Rate	Up to 5 kWp/man day
Accessories:	Aluminum middle and end clamps: EN AW- 6063 T66
Connection type	Grade 8.8 (galvanized) M12 and M8 (clamps) according to DIN933, 125, 9021, 985, 912 EPDM rubber against Electrolytic corrosion
Warranty	20 years
Manufacturing Location	Depending on location of installation site

GERMANy

Solar Cube GmbH
Edisonstraße 11, 85716
Unterschleissheim
Munich
Phone: +49 89 5708 4105
Fax: +49 89 5708 4168

www.solarcube.com

UNITED STATES

Solar Cube LLC
991 US Highway 22 West
Suite 200
Bridgewater, NJ 08807
Phone: +1 917 720 7620
Phone: +1 201 643 7604

info@solarcube.com

GREECE

Solar Cube Ltd
Strymonos 5,
Votanikos
Athens, 118 55
Phone: +30 210 689 9212
Fax: +30 210 689 9211

Catalogue Edition June 2012

INDIA

Solar Cube India (pvt) Ltd
Corporate Office
R-8, Nehru Enclave, Nehru Place
New Delhi - 110019
Phone : +91-11-41076672

Norm & Standards

Eurocode 1:

- Actions on structures (EC1, ENV 1991 1-1, 1--3, 1-4),
- Part 1-1: General actions – Densities, self-weight and imposed loads
 - Part 1-3: General actions – Snow loads
 - Part 1-4: General actions – Wind actions

Eurocode 3:

- Design of steel structures (EC3, ENV 1991-1-1, 1-3)
- Part 1-1: General rules and rules for buildings
 - Part 1-3: General – Cold formed thin gauge members and sheeting
 - Part 1-8: General – Design of joints
 - Part 1-10: General – Material toughness and through thickness assessment

Eurocode 8:

- Design of structures for earthquake resistance (EC8, ENV 1998-1-1)
- Part 5: Foundations, retaining structures and geotechnical aspects
 - Part 1: General rules, seismic actions and rules for buildings
 - National Norms for Earthquake Resistance

Other Regional Standards where Eurocodes not applicable.



GERMANy

Solar Cube GmbH
Edisonstraße 11, 85716
Unterschleissheim
Munich
Phone: +49 89 5708 4105
Fax: +49 89 5708 4168

www.solarcube.com

UNITED STATES

Solar Cube LLC
991 US Highway 22 West
Suite 200
Bridgewater, NJ 08807
Phone: +1 917 720 7620
Phone: +1 201 643 7604

info@solarcube.com

GREECE

Solar Cube Ltd
Strymonos 5,
Votanikos
Athens, 118 55
Phone: +30 210 689 9212
Fax: +30 210 689 9211

Catalogue Edition June 2012

INDIA

Solar Cube India (pvt) Ltd
Corporate Office
R-8, Nehru Enclave, Nehru Place
New Delhi - 110019
Phone : +91-11-41076672

Solar Cube

Switch to solar

visit us online at
www.solarcube.com



Sign up for our English newsletter
Scan with Apple or Android device.

GERMANp

Solar Cube GmbH
Edisonstraße 11, 85716
Unterschleissheim
Munich
Phone: +49 89 5708 4105
Fax: +49 89 5708 4168

www.solarcube.com

UNITED STATES

Solar Cube LLC
991 US Highway 22 West
Suite 200
Bridgewater, NJ 08807
Phone: +1 917 720 7620
Phone: +1 201 643 7604

info@solarcube.com

GREECE

Solar Cube Ltd
Strymonos 5,
Votanikos
Athens, 118 55
Phone: +30 210 689 9212
Fax: +30 210 689 9211

Catalogue Edition June 2012

INDIA

Solar Cube India (pvt) Ltd
Corporate Office
R-8, Nehru Enclave, Nehru Place
New Delhi - 110019
Phone : +91-11-41076672